



TRADE QUALITY TRANSPORT  
HARDWARE, GAS STRUTS, DRAWER  
SLIDES AND RUBBER EXTRUSION.  
**ENGINEERED TOUGH.**

## PRODUCT GUIDE

Available at  
**BUNNINGS**  
warehouse

# CONTENTS

5	LOCKS
9	FASTENERS
15	PINS & CLIPS
19	GATE HARDWARE
23	HINGES
29	HANDLES
35	LASHING RINGS
39	RUBBER
43	VEHICLE ACCESSORIES
47	GAS STRUTS
51	DRAW SLIDES



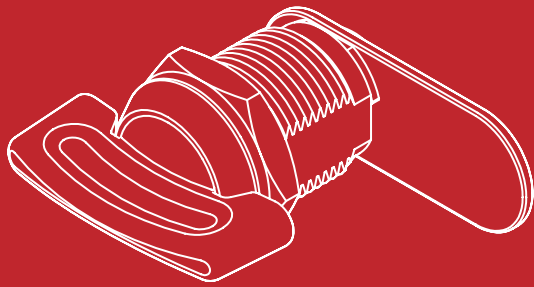


Exclusively available through the trusted Bunnings Warehouse retail network, Goliath Hardware has been proudly serving trade customers and DIYer's since 1983. Our range of products is meticulously engineered to withstand everyday use, including drawer slides, gas struts, hinges, lashing rings, fasteners, locks, handles, rubber, gate hardware, and vehicle accessories.

You need componentry that you can depend on day in and day out. Function and dependability are crucial for our customers which is why they're at the heart of the Goliath range. Our products are proven and reliable. That's why they're the tradesman's choice.

[GOLIATHHARDWARE.COM.AU](http://GOLIATHHARDWARE.COM.AU)





## LOCKS

Often attached to automotive or toolbox panels, locks enable access (open and close), in addition to security locking. Available in a range of domestic, industrial and commercial versions across both manual and electronic actuation.



### TOOLBOX LOCK

Black wing head lock.

**4230038**

CMN2BPW-CW-GP  
Black, Zinc Plated. Individual.



### TOOLBOX LOCK

Chrome Whale Tail Lock. Goliaths most secure lock. Padlockable and keyed.

**4230103**

WTC140C-GP  
Chrome Plated. Individual.



### TOOLBOX LOCK

Stainless Steel Drop T lock. Ideal for toolbox, ute tray, Truck/vans. Keyed.

**4230017**

91247-MX-GP  
Stainless Steel Individual



### TOOLBOX LOCK

Black Whale Tail Lock. Goliaths most secure lock. Padlockable and keyed.

**0432155**

WTB140-GP  
Black. Individual.



### TOOLBOX LOCK

Black Drop T lock. Ideal for toolbox, ute tray, Truck/vans. Keyed.

**0432154**

91247-MXB-GP  
Black. Individual.



### COMPRESSION LOCK

Large Chrome Compression Lock with adjustable tongue. Keyed.

**4230007**

10207B-CP-GP  
57 x 110mm. Chrome Plated. Individual



### COMPRESSION LOCK

Small Chrome Compression Lock with adjustable tongue. Keyed.

**4230006**

10208B-CP-GP  
41 x 87mm. Chrome Plated. Individual



### COMPRESSION LOCK

Small stainless steel paddle latch. Keyed.

**4230015**

91264-GP  
82 x 82mm. Stainless Steel. Individual.



### COMPRESSION LOCK

Black powdercoated Compression Lock with adjustable tongue. Keyed.

**4230000**

C2LiBP7-GP  
Black Powder Coated. Individual.



### COMPRESSION LOCK

Large stainless steel paddle latch. Keyed.

**4230016**

FU902SS-gp  
120 x 92mm. Stainless Steel. Individual.



### COMPARTMENT LOCK

Compartment lock barrel with L shaped tongue. Keyed.

**4230131**

65118-GP  
25mm. Zinc Plated. Individual



### COMPARTMENT LOCK

Compartment lock barrel with straight tongue. Keyed.

**4230209**

NX19-GP  
30 x 19mm. Chrome Plated. Individual.



## COMPARTMENT LOCK

Black plastic push button lock. Keyed.

**4230039**

93LB7-GP  
Black Plastic. Individual.

# A GUIDE TO CLEANING AND CARE FOR COMPRESSION LOCKS

Compression locks are often the unsung heroes in the hardware world, faithfully safeguarding everything from your toolbox to the interiors of your campervan. But just like any superhero, they need a little TLC to keep them in tip top shape. Here's why cleaning your locks is essential and how to make it a breeze:

## Why does cleanliness matter?

### 1. Smooth Operation:

Over time, dust, dirt, and debris can accumulate inside the intricate mechanisms of compression locks, which can impact the operation of the lock itself. Regular cleaning ensures that these obstructions are removed, allowing the lock to function seamlessly every time it's engaged.

### 2. Corrosion Prevention:

Compression locks, especially those installed in outdoor or harsh environments, are susceptible to corrosion. Keeping them clean helps to remove moisture and contaminants that can accelerate corrosion, prolonging the lock's lifespan and preserving its structural integrity.

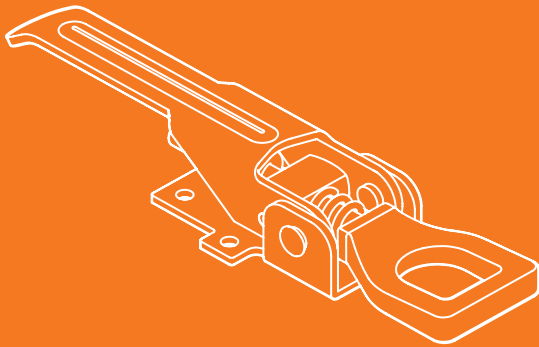
### 3. Enhanced Security:

A clean lock is less prone to jamming or malfunctioning, ensuring that it operates as intended (especially when security is paramount). By removing any obstructions to the locking mechanism, you improve the lock's capacity to function as designed.

## How to maintain compression locks:

1. Incorporate cleaning compression locks into your regular maintenance schedule. Use a mild detergent solution and a soft cloth to wipe down the exterior surfaces of the lock, ensuring that all dirt and grime are removed.
2. Pay attention to the intricate components of the lock if accessible, such as the keyway and latch mechanism. Use a small brush or compressed air to remove any debris that may have accumulated in these hard-to-reach areas.
3. After cleaning, apply a small amount of lubricant to the moving parts of the lock, such as the latch and keyway. This helps to reduce friction and prevent corrosion, ensuring smooth operation.





# FASTENERS

Designed to mechanically, or magnetically, keep panels or surfaces apart, or together, and often used on vehicles, gates, truck panels, caravans and doors. Manufactured in stainless, rubber, nylon, plastic and brass.



### OVER CENTRE FASTENER

Zinc plated over centre faster for trucks utes and storage boxes. Catch plate included. Weather resistant.

**4230021**

18-613MS-GP  
Zinc Plated. Individual.



### OVER CENTRE FASTENER

Stainless steel over centre fastener. Padlockable. Catch plate included. Ideal for Utes and trucks.

**4230020**

29-569SS-GP  
Stainless Steel. Individual.



### OVER CENTRE FASTENER

Zinc plated over centre faster for light duty applications. Catch plate included. Weather resistant.

**4230154**

65361-GP  
75 x 30mm. Zinc Plated. Individual.



### OVER CENTRE FASTENER

Zinc plated, lockable over centre faster for light duty applications. Catch plate included. Weather resistant.

**4230152**

6576SZ-GP  
52 x 20 x 20mm. Zinc Plated. Individual.



### OVER CENTRE FASTENER

Marine grade stainless steel over centre fastener for maximum corrosion resistance. Padlockable. Catch plate included. Ideal for Utes and trucks.

**4230144**

701L-ASS-GP  
80 x 30 x 22mm. Stainless Steel. Individual



### OVER CENTRE FASTENER

Zinc plated over centre fastener. Padlockable. Catch plate included. Ideal for Utes and trucks.

**4230032**

701L-GP  
90mm. Zinc Plated. Individual.



### OVER CENTRE FASTENER

Marine grade stainless steel over centre fastener for maximum corrosion resistance. Padlockable. Catch plate included. Ideal for Utes and trucks.

**4230145**

702L-ASS-GP  
100 x 40 x 22mm. Stainless Steel. Individual.



### OVER CENTRE FASTENER

Zinc plated over centre fastener with safety catch. Padlockable. Catch plate included. Ideal for Utes and trucks.

**4230029**

702L-C-GP  
120mm. Zinc Plated. Individual.



### OVER CENTRE FASTENER

Zinc plated over centre fastener. Padlockable. Catch plate included. Ideal for Utes and trucks.

**4230031**

702L-GP  
120mm. Zinc Plated. Individual.



### OVER CENTRE FASTENER

Zinc plated over centre fastener with swivel head latch. Catch plate included. Ideal for Utes and trucks.

**4230086**

702SSH-Z-GP  
Zinc Plated. Individual.



### OVER CENTRE FASTENER

Zinc plated over centre fastener with safety catch. Padlockable. Catch plate included. Ideal for Utes and trucks.

**4230030**

703L-GP  
160mm. Zinc Plated. Individual.



### OVER CENTRE FASTENER

Stainless steel over centre fastener with safety catch. Padlockable. Catch plate included. Ideal for Utes and trucks.

**4230146**

703RL-ASS-GP  
145 x 50 x 22mm. Stainless Steel. Individual.



### OVER CENTRE FASTENER

Zinc plated over centre fastener. Padlockable. Catch plate included. Ideal for Utes and trucks.

**4230028**

703RL-GP  
160mm. Zinc Plated. Individual.



### BOLT ON HOOK

Zinc plated J hooks. Used on trays and trailers to secure tarps and rope.

**4230165**

9132-GP  
15 x 42 x 80mm. Zinc Plated. Individual.



### SPRING BOLT

Zinc plated spring bolt with extended grip. Can be used as Bolt and handle in one.

**4230022**

92393-GP  
160 x 13mm Zinc Plated Individual.



### SPRING BOLT

Zinc plated spring bolt with extended shoot to cross larger gaps.

**4230040**

9535V-GP  
160 x 10mm. Zinc Plated. Individual.



### SPRING BOLT

Zinc plated spring bolt.

**4230105**

9599-GP  
13mm. Zinc Plated. Individual



### SPRING BOLT

Zinc Plated spring bolt.

**4230098**

1213861-GP  
5mm. Zinc Plated. 2 pack.



### SPRING BOLT

Marine grade 316 stainless steel Spring Bolt for maximum corrosion resistance.

**4230210**

0840-0015S-MARINE-GP  
12mm. Stainless Steel. Individual.



### OVER CENTRE FASTENER

Zinc plated over centre fastener. Heavy Duty. Ideal for ute trays.

**4230041**

ART9085258-GP  
260 x 45mm. Zinc Plated. Individual.



### TOGGLE LATCH

Zinc plated over centre faster for light duty applications. Catch plate included.

**0128683**

DK010-GP  
Zinc plated. Individual.



### TOGGLE LATCH

Zinc plated over centre faster for light duty applications. Catch plate included.

**0128681**

DK011-GP  
Zinc plated. Individual.



### TOGGLE LATCH

Zinc plated over centre faster for light duty applications. Padlockable. Catch plate included. Weather resistant.

**0128680**

DK012-GP  
Zinc plated. Individual.



### TOGGLE LATCH

Zinc plated over centre faster for light duty applications. Padlockable. Catch plate included.

**0128679**

DK014-GP  
Zinc plated Individual



### TOGGLE LATCH

Zinc plated over centre faster for light duty applications. Catch plate included.

**0128676**

DK034-GP  
Zinc plated. Individual.



### TOGGLE LATCH

Chrome plated over centre faster for light duty applications. Padlockable. Catch plate included.

**0128677**

DK036-GP  
Zinc plated. Individual.



### ANTILUCE WELD ON

Zinc plated, Weld on fastener for ute trays. 1 handed operation.

**4230010**

UES3275-1-GP  
25mm. Zinc Plated. Pair.



### ANTILUCE BOLT ON

Zinc plated, bolt on fastener for ute trays. 1 handed operation.

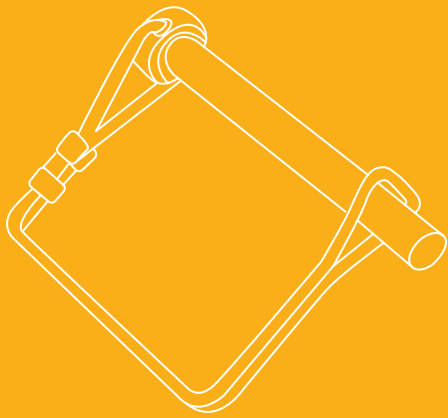
**4230009**

UES3285ZP-GP  
20mm. Zinc Plated. Pair

# Fastener Finish Comparison Guide

FINISH TYPE	DESCRIPTION	ADVANTAGES	DISADVANTAGES	RECOMMENDED APPLICATIONS
<b>Zinc Plating</b>	Thin layer of zinc applied to steel through electroplating process	Provides corrosion resistance	May wear off over time, less durable than other finishes	General automotive, non-exposed areas
<b>304 Stainless Steel</b>	Alloy of steel with chromium and other metals, inherently corrosion-resistant	corrosion resistant, durable, easy to weld	Generally more expensive than other finishes, limited availability in certain sizes	Exterior applications
<b>316 Stainless Steel</b>	Alloy of steel with greater corrosion resistance and strength than 304	Superior corrosion resistance & durability	More expensive than 304 counterpart, limited availability in certain sizes	Exterior applications including marine applications
<b>Chrome Plating</b>	Thin layer of chromium applied to steel through electroplating process	Provides corrosion resistance, highly reflective and decorative	May chip or flake over time with wear and tear	Exterior applications, decorative use





## PINS & CLIPS

From securing machinery components to assembling furniture and fixtures, these simple yet versatile solutions provide quick and reliable fastening without the need for tools or complex installation processes. A must have for any toolbox or home workshop.



## PINS AND CLIPS

Also known as an 'R' clip. A versatile grip clip ideal for axle ends & shafts, securing lock nuts on shafts and tailboard retention on trailers.

**4230071**

B13-GP  
5 x 2mm. Zinc Plated. 2 pack.



## PINS AND CLIPS

Also known as an 'R' clip. A versatile grip clip ideal for axle ends & shafts, securing lock nuts on shafts and tailboard retention on trailers.

**4230072**

B14-GP  
6 x 2mm. Zinc Plated. 2 pack.



## PINS AND CLIPS

Solid steel draw bar pin designed specifically for trailers.

**4230173**

B3077-GP  
12.7 x 90mm. Yellow Chromate Plated. Individual.



## PINS AND CLIPS

Zinc plated draw bar pin ideal for trailers and hitches.

**4230223**

B3078-GP  
16mm. Yellow Chromate Plated. Individual



## PINS AND CLIPS

Large Zinc plated draw bar pin ideal for trailers and hitches.

**4230221**

B412-GP  
29mm. Yellow Chromate Plated. Individual.



## PINS AND CLIPS

Also known as a hitch pin. Locking pin is ideal for trailers and tow bars. Grip clip included.

**0083469**

LP120-GP  
15mm x 120mm. Zinc Plated. Individual



## PINS AND CLIPS

Brass coated lynch pin used for securing shaft ends. Ideal for trailers and axles.

**4230079**

B2-GP  
6mm. Brass Coated. 2 pack.



## PINS AND CLIPS

Brass coated lynch pin used for securing shaft ends. Ideal for trailers and axles.

**4230077**

B3-GP  
8mm. Brass Coated. 2 pack.



## PINS AND CLIPS

Brass coated lynch pin used for securing shaft ends. Ideal for trailers and axles.

**4230078**

B4-GP  
4.5mm. Brass Coated. 2 pack.



## PINS AND CLIPS

Brass coated lynch pin used for securing shaft ends. Ideal for trailers and axles.

**4230076**

B5-GP  
9.5mm. Brass Coated. 2 pack.

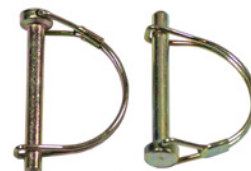


## PINS AND CLIPS

Brass coated lynch pin used for securing shaft ends. Ideal for trailers and axles.

**4230075**

B6-GP  
11mm. Brass Coated. 2 pack.



## PINS AND CLIPS

D shape loop locking pin used to secure ends of shafts where there is a risk of clip vibrating loose.

**4230122**

B6100-GP  
8mm. Brass Coated. 2 pack.



## PINS AND CLIPS

Brass coated lynch pin used for securing shaft ends. Ideal for trailers and axles.

### 4230123

B8100-GP  
6mm. Brass Coated. 2 pack.

## PINS AND CLIPS

D shape loop locking pin used to secure ends of shafts where there is a risk of clip vibrating loose.

### 4230124

B6101-GP  
10mm. Brass Coated. 2 pack.



## PINS AND CLIPS

Square loop locking pin used to secure ends of shafts where there is a risk of clip vibrating loose. More clearance than D shape loop. Ideal for tractor linkage systems.

### 4230204

B6102-GP  
8mm. Yellow Chromate Plated. 2 pack



## PINS AND CLIPS

Square loop locking pin used to secure ends of shafts where there is a risk of clip vibrating loose. More clearance than D shape loop. Ideal for tractor linkage systems.

### 4230205

B6103-GP  
10mm. Yellow Chromate Plated. 2 pack

Replacing a component before it fails ensures your vehicle is safely maintained at all times. Not sure when a pin or clip should be replaced?

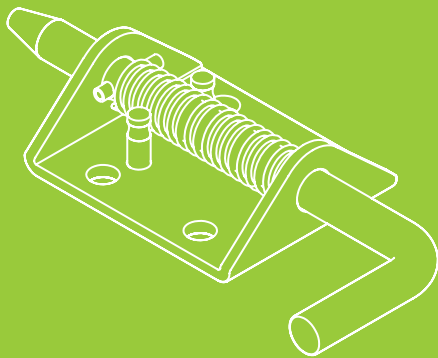
**Here's a few telltale signs to help you keep your pins and clips up to scratch:**

1. Visible damage: Inspect pins and clips regularly for signs of wear, deformation, or damage. This includes bends, cracks, corrosion, or missing pieces. If you notice any damage to the pin and clip, replace it immediately.
2. Looseness or play: If a pin or clip becomes loose or shows signs of excessive play, it may no longer provide a secure attachment. Loose pins or clips can lead to component misalignment, rattling noises, or even detachment, posing a safety risk. Replace loose pins or clips to prevent further issues.
3. Failure during maintenance: During routine maintenance or repairs that require removing pins or clips, take note of their condition. If a pin or clip appears worn, damaged, or difficult to reinstall properly, it's a good idea to replace it.

## A final note on pins and clips:

Pins and clips subjected to high levels of stress, vibration, or exposure to harsh environmental conditions can wear out faster than those in low-stress areas. It's always a good idea to inspect and replace pins and clips in high-stress areas more frequently to ensure continued reliability.





## GATE HARDWARE

For a smooth swing and secure latch every time, trust quality Goliath gate hardware components to give you peace of mind in safety and efficiency. Low maintenance with premium performance.



### GATE HARDWARE

Left Handed, two ball bearing Butt Hinges. Corrosion resistant.

**4160554**

G122LHZN  
115 x 100mm. Galvinised Steel.  
Individual.



### GATE HARDWARE

Right Handed, two ball bearing Butt Hinges. Corrosion resistant.

**4160555**

G122RHZN  
115 x 100mm. Galvinised Steel.  
Individual



### GATE HARDWARE

Heavy duty strap hinge for heavy gates. Corrosion resistant.

**4160553**

G137RHZN  
150 x 360mm. Galvinised Steel.  
Individual.



### GATE HARDWARE

Zinc plated small tower bolt ideal for timber gates. 1 keeper.

**4160558**

G239  
16 x 440mm. Zinc plated. Individual.



### GATE HARDWARE

Zinc plated large tower bolt ideal for timber gates. 2 keepers.

**4160560**

G240  
16 x 600mm. Zinc plated. Individual.



### GATE HARDWARE

Zinc plated gate coil spring for automatic closing mechanism on outdoor gates.

**4160561**

G3305PZN  
Zinc plated. Individual.



### GATE HARDWARE

Left handed strap hinge set for gates. Corrosion resistant.

**4160550**

G3LHZN  
360mm. Galvinised Steel. Individual.



### GATE HARDWARE

Right handed strap hinge set for gates. Corrosion resistant.

**4160551**

G3RHZN  
360mm. Galvinised Steel. Individual.



### GATE HARDWARE

Two way gate slam latch allows gates to be opened inwards & outwards.

**4160563**

G50ZN  
35mm. Zinc plated. Individual.



### GATE HARDWARE

Gate spring bolt suitable for gates & garages.

**4160564**

G810ZN  
16 x 240mm. Galvinised Steel. Individual



### GATE HARDWARE

Zinc plated panic bolt. Comes with 2 keepers.

**4160562**

G11BZN  
300mm. Zinc plated. Individual

# Gate Hardware Installation Guide

## MATERIALS NEEDED:

- Gate hinges (quantity depends on the size and weight of the gate)
- Locking mechanism (depending on your installation, you may wish to use a coil spring, tower bolt or slam latch)
- Screws or bolts (appropriate size and type for your gate and mounting surface)
- Electric drill with appropriately sized drill bits
- Screwdriver or wrench
- Spirit level
- Measuring tape

## INSTALLATION STEPS:

### 1. Preparation

- Begin by preparing your gate and mounting location. Determine the desired location for the gate hinges and locking mechanism on both the gate and the adjoining structure (e.g., fence post or wall).

### 2. Attach hinges to the gate

- Position the strap hinges on the gate, aligning them with the desired mounting locations. Use a level to ensure that the hinges are straight and level.
- Mark the locations for the screw holes on the gate
- Using a drill, create pilot holes at the marked locations to prevent splitting the wood.
- Secure the hinges to the gate using screws or bolts, tightening them securely.

### 3. Attach Strap Hinges to the Adjoining Structure:

- With the help of an assistant, hold the gate in its desired position against the adjoining structure (e.g., fence post or wall).
- Position the strap hinges on the adjoining structure, aligning them with the corresponding hinges on the gate.
- Mark the locations for the screw holes on the adjoining structure.
- Using a drill, create pilot holes at the marked locations.
- Secure the strap hinges to the adjoining structure using screws or bolts, ensuring that they are tightly fastened.

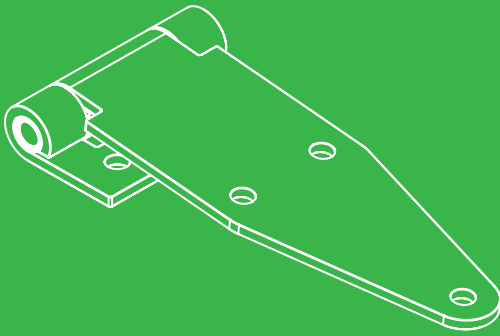
### 4. Install the locking mechanism:

- Determine the appropriate location for the slam latch or bolt latch mechanism on the gate and adjoining structure. Typically, this mechanism is installed at the desired height on the gate for easy access. If you're using a coil spring mechanism, this is usually positioned at the top of the gate to provide tension for self closing.
- Mark the locations for the screw holes on both the gate and the adjoining structure.
- Using a drill, create pilot holes at the marked locations.
- Attach the locking mechanism to the gate and adjoining structure using screws or bolts, ensuring that it is securely fastened.

### 5. Adjustment and Testing:

- Once all hardware is securely installed, test the gate to ensure that it swings freely and closes properly.
- Test the slam latch or bolt mechanism to ensure it engages properly when the gate is closed.
- Adjust the tension of the locking mechanism (if using a coil spring) as needed to achieve the desired self-closing speed.
- Make any necessary adjustments to the hinge alignment or hardware tightness to ensure smooth operation.  
It's always worth double checking these few things:
- Inspect all hardware to ensure that it is securely fastened and functioning correctly.
- Double-check the alignment and levelness of the gate.
- Test the gate again to ensure that it operates smoothly and closes securely.





## HINGES

Allowing two different materials, or panels, to be joined, but still move independently to each other across a range of weld on, bolt on and screw on options. Configurations include single length to continuous length options and a range of stainless steel, steel, PVC and coextruded rubber and aluminium.



## HINGES

Weld on barrel hinge. Strong, compact method for attaching metal doors to metal frames. Can be used horizontally or vertically.

**4230054**

7011-00-100-GP  
100mm. Steel with Brass Pin. Individual.



## HINGES

Polished stainless steel flap hinge. Corrosion resistant for indoor or outdoor use.

**0083461**

BH1013SS-GP  
101 x 30 x 2mm. Stainless Steel. Individual.



## HINGES

Polished stainless steel small gate hinge. Longer hinge leaf for easy fixing to posts & gates. Corrosion resistant for indoor or outdoor use.

**0083465**

BH10225SS-GP  
102 x 25 x 5mm. Stainless Steel. Individual.



## HINGES

Polished stainless steel uneven hinge. Corrosion resistant for indoor or outdoor use.

**0083458**

BH1074SS-GP  
107 x 40 x 2mm. Stainless Steel.



## HINGES

Small stainless steel hinge. Corrosion resistant for indoor or outdoor use.

**0083467**

BH3838SS-GP  
38 x 38 x 4.5mm. Stainless Steel.



## HINGES

Small stainless steel uneven hinge. Corrosion resistant for indoor or outdoor use.

**0083463**

BH4040SS-GP  
40 x 40 x 2mm. Stainless Steel.



## HINGES

Small stainless steel uneven hinge. Corrosion resistant for indoor or outdoor use.

**0083464**

BH5638SS-GP  
56 x 38 x 5mm. Stainless Steel.



## HINGES

Small stainless steel butterfly hinge. Corrosion resistant for indoor or outdoor use.

**0083459**

BH6030SS-GP  
60 x 30 x 1.5mm. Stainless Steel.



## HINGES

Zinc plated tail board hinge gudgeon. Ideal for tail gates, and drop sides on trailers, vans & utes.

**4230214**

HGB32ZD-GP  
Zinc plated. Individual.



## HINGES

Zinc plated, bolt on sideboard hinge kit. Able to be used left and right side.

**4230132**

HGB32ZDKIT-GP  
Zinc plated. Individual.



## HINGES

Zinc plated, bolt on left hand hinge kit. Lightweight, ideal for side opening trays.

**4230139**

HKL-GP  
Zinc plated. Individual.



## HINGES

Zinc plated, bolt on right hand hinge kit. Lightweight, ideal for side opening trays.

**4230140**

HKR-GP  
Zinc plated. Individual.



## HINGES

Zinc plated drop side tailgate strap. Ideal for tail gates, and drop sides on trailers, vans & utes. Can be used with Goliath drop side gudgeon.

**4230216**

HS235Z-GP  
235mm. Zinc Plated. Individual.



## HINGES

Zinc plated drop side tailgate strap. Ideal for tail gates, and drop sides on trailers, vans & utes. Can be used with Goliath drop side gudgeon.

**4230215**

HS95Z-GP  
95mm. Zinc Plated. Individual.



## HINGES

Zinc plated, heavy duty multipurpose hinge. Ideal for truck doors.

**4230106**

UMPS-GP  
270mm. Zinc Plated. Individual.



## HINGES

Stainless steel, Lightweight hinge. Corrosion resistant for indoor or outdoor use.

**4230225**

6189-GP  
40 x 80mm. Stainless Steel. Individual.



## HINGES

Stainless steel hinge.

**0083460**

BH7640SS-GP  
76 x 40 x 2mm. Stainless Steel.



## HINGES

Stainless steel drilled piano hinge

**0088420**

4214347D-GP  
40 x 1.2 x 1800mm. Stainless Steel. Individual.



## HINGES

Galvanised Steel non drilled piano hinge.

**0088421**

4014691-GP  
40 x 1.2 x 1800mm. Galvanised Steel. Individual.



## HINGES

Galvanised Steel drilled piano hinge

**0088422**

4014691D-GP  
40 x 1.2 x 1800mm. Galvanised Steel. Individual.



# Hinge Selection Guide

## Choosing the Right Hinges for Your Project

### 1. CONSIDER THE APPLICATION

Start by considering the specific application and requirements of your project. Will the hinges be used for interior doors, cabinets, gates, or heavy-duty machinery?

Understanding the application will help you narrow down the type of hinges needed.

### 2. DETERMINE LOAD AND WEIGHT REQUIREMENTS

Evaluate the weight and load-bearing capacity of the door, gate, or object that the hinges will support. Choose hinges that are rated for the appropriate weight capacity to ensure reliable performance and longevity.

### 3. ASSESS DURABILITY AND MATERIAL

Select hinges made from durable materials that can withstand the environmental conditions and demands of the application. Common materials include steel, stainless steel, brass, and aluminium. Consider factors such as corrosion resistance, strength, and aesthetics when choosing the material.

### 4. CHOOSE THE RIGHT TYPE OF HINGE

There are various types of hinges available, each designed for specific applications and functions. Some common types include:

- **Butt hinges:** Ideal for doors and cabinets, these hinges feature two leaves connected by a pin.
- **Strap hinges:** Suitable for gates, barn doors, and heavy-duty applications, these hinges have a long, narrow design with a wide range of motion.
- **Concealed hinges:** Used for cabinets and furniture, these hinges are hidden from view when the door is closed, providing a clean and seamless appearance.
- **Piano hinges:** Also known as continuous hinges, these long, narrow hinges are ideal for applications requiring a continuous and even distribution of weight, such as piano lids, toolboxes, and folding partitions.
- **Ball bearing hinges:** Known for their smooth operation and durability, these hinges are equipped with ball bearings between the knuckles to reduce friction and wear.
- **Gate hinges:** Specifically designed for gates and fences, these hinges are robust and often feature self-closing or adjustable tension mechanisms.

### 5. CONSIDER INSTALLATION REQUIREMENTS

Evaluate the installation requirements of your project, including the type of mounting surface and available space. Choose hinges that are compatible with the mounting surface and provide sufficient clearance for smooth operation.

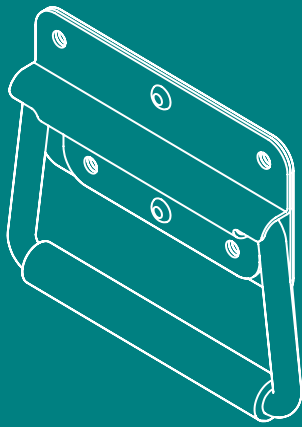
### 6. FACTOR IN AESTHETIC PREFERENCES

Lastly, consider the aesthetic preferences of your project. Hinges come in a variety of finishes, styles, and designs to complement different decor styles and architectural themes. Whether you prefer a classic, rustic, modern, or industrial look, there's a hinge style to suit your needs.

### 7. SEEK PROFESSIONAL ADVICE IF NECESSARY

If you're unsure about which hinges to choose for your project, don't hesitate to seek advice from the Bunnings Trade team. They can provide valuable insights and recommendations based on your specific requirements and budget.





# HANDLES

Matching performance with aesthetics, handles offer ergonomic functionality, user comfort and reliable operation for doors, hatches, cabinets and drawers. With a versatile range of handles on offer, you'll find the right fit for your application with Goliath.



## HANDLE

Chrome Pplated, corrosion resistant grab handle.

**4230073**

1188-GP  
100mm. Chrome Plated. Individual.



## HANDLE

Black plastic grab handle with concealed fixings. Weight rated to 100KG.

**4230057**

1-30357B-GP  
Black Polypropylene. Individual.



## HANDLE

Chrome plated bolt on handle. Ideal for caravans, trucks, doors & cabinets.

**4230170**

20166-GP  
392 x 75mm. Chrome Plated. Individual.



## HANDLE

Black plastic lightweight handle. Predrilled for easy installation.

**4230158**

2363-GP  
210mm. Plastic. Individual.



## HANDLE

Black polypropylene lightweight handle. Predrilled for easy installation.

**4230200**

25152-GP  
115 x 41mm. Black Polypropylene. Individual.



## HANDLE

Black polypropylene lightweight handle. Predrilled for easy installation.

**4230228**

25153-GP  
140mm. Black Polypropylene. Individual.



## HANDLE

Zinc plated, corrosion resistant drawer handle. Ideal for caravans, trailers and drawer units.

**4230227**

2575-125-GP  
125mm. Zinc Plated. Individual.



## HANDLE

Zinc plated, corrosion resistant drawer handle. Ideal for caravans, trailers and drawer units.

**4230198**

2575-145-GP  
145mm. Zinc Plated. Individual.



## HANDLE

Zinc plated, corrosion resistant drawer handle. Ideal for caravans, trailers and drawer units.

**4230199**

2575-160-GP  
160mm. Zinc Plated. Individual.



## HANDLE

Stainless steel chest handle. Recessed handle remains in closed position to stay out of the way until needed.

**4230160**

6277SS-GP  
76 x 57mm. Stainless Steel. Individual.



## HANDLE

Zinc plated chest handle. Spring loaded to reduce rattle when used on vehicles. PVC sleeved handle for comfort.

**4230163**

65364-GP  
140 x 81mm. Individual.



## HANDLE

Stainless steel, weatherproof grab handle. Concealed fixing to prevent tampering.

**4230169**

7040-300-GP  
300mm. Stainless Steel. Individual.



### HANDLE

Zinc plated recess handle.  
Ideal for exterior use.

**4230156**

90006-GP  
200 x 91 x 24mm. Zinc Plated. Individual.



### HANDLE

Black powder coated pull handle.  
Suitable for drawers, cabinets and doors.

**4230157**

9-00214-GP  
Powder Coated. Individual.



### HANDLE

Aluminium bolt on grab handle.  
Lightweight, suitable for indoor and outdoor use.

**4230168**

9154-GP  
300mm. Aluminium. Individual.



### HANDLE

Chrome plated bolt on handle. Ideal for caravans, trucks, doors & cabinets.

**4230167**

92285-GP  
294 x 52mm. Chrome Plated. Individual.



### HANDLE

Zinc plated chest handle. Spring loaded to reduce rattle when used on vehicles. PVC sleeved handle for comfort.

**4230008**

95-637MS-GP  
Zinc Plated. Individual.



### HANDLE

Brushed stainless steel lightweight grab handle with round mounting plates. Indoor and outdoor use.

**0083470**

GH251220SBR-GP  
1220mm. Stainless Steel/Brushed Individual.



### HANDLE

Polished stainless steel grab handle with tear drop mounting plates. Ideal for mounting in limited space.

**0083479**

GH25180SMT-GP  
180mm. Stainless Steel/Polished. Individual.



### HANDLE

Brushed stainless steel lightweight grab handle with round mounting plates. Indoor and outdoor use.

**0083478**

GH25300SBR-GP  
300mm. Stainless Steel/Brushed. Individual.



### HANDLE

Polished stainless steel grab handle with tear drop mounting plates. Ideal for mounting in limited space.

**4230130**

GH25335SMT-GP  
335mm. Stainless Steel/Polished. Individual.



### HANDLE

Brushed stainless steel lightweight grab handle with round mounting plates. Indoor and outdoor use.

**0083475**

GH25380SBR-GP  
380mm. Stainless Steel/Brushed. Individual.



### HANDLE

Polished stainless steel grab handle with tear drop mounting plates. Ideal for mounting in limited space.

**0083480**

GH25450SMT-GP  
450mm. Stainless Steel/Polished. Individual.



### HANDLE

Brushed stainless steel lightweight grab handle with round mounting plates. Indoor and outdoor use.

**0083474**

GH25460SBR-GP  
460mm. Stainless Steel/Brushed. Individual.



### HANDLE

Polished stainless steel grab handle with tear drop mounting plates. Ideal for mounting in limited space.

**0083481**

GH25600SMT-GP  
600mm. Stainless Steel/Polished.  
Individual.



### HANDLE

Brushed stainless steel lightweight grab handle with round mounting plates. Indoor and outdoor use.

**0083472**

GH25760SBR-GP  
760mm. Stainless Steel/Brushed.  
Individual.



### HANDLE

Brushed stainless steel lightweight grab handle with round mounting plates. Indoor and outdoor use.

**0083471**

GH25915SBR-GP  
915mm. Stainless Steel/Brushed.  
Individual.



### HANDLE

Rear fixing, Heavy Duty, Lockable L handle. Suits most lever type garage doors, cabinets and truck bodies.

**4230217**

LHR100-GP  
115mm. Chrome Plated. Individual.



### HANDLE

Stainless steel turning lock/lift handle. Marine grade for maximum corrosion resistance. Mounts flush for finished look. Ideal for use on boats and yachts as well as other enclosure applications.

**0083482**

LLH62SS-GP  
61.5mm. Stainless Steel. Individual.



### HANDLE

Zinc plated chest handle. Corrosion resistant.

**0128675**

LS001-GP  
Nickel Plated. Individual.



### HANDLE

Zinc plated chest handle. Spring loaded to reduce rattle when used on vehicles. PVC sleeved handle for comfort.

**0128670**

LS003-GP  
Chrome Plated. Individual.



### HANDLE

Zinc plated chest handle. Corrosion resistant.

**0128671**

LS010-100-GP  
100mm. Nickel Plated. Individual.



### HANDLE

Zinc plated chest handle. Corrosion resistant.

**0128672**

LS010-80-GP  
80mm. Nickel Plated. Individual.



### HANDLE

Chrome plated, heavy duty swing handle. Commonly used on electrical enclosures. Padlockable for extra security.

**4230147**

SHP142CP-GP  
142mm. Chrome Plated. Individual.



### HANDLE

Chrome plated T handle. Ideal for garage doors, sheds. Vehicle trays and trailers.

**4230218**

THR100-GP  
100mm. Chrome Plated. Individual.



### HANDLE

Rear fixing chrome plated T handle. Ideal for garage doors, sheds. Vehicle trays and trailers.

**4230219**

THR60-GP  
60mm. Chrome Plated. Individual.



#### HANDLE

Black powder coated pull handle. Ideal for drawers, cabinets and doors.

**0166143**

UES052085B-GP  
210mm. Black Powder Coated.



#### HANDLE

Chrome plated pull handle. Ideal for drawers, cabinets and doors.

**4230067**

UES052085-GP  
210mm. Chrome Plated. Individual.

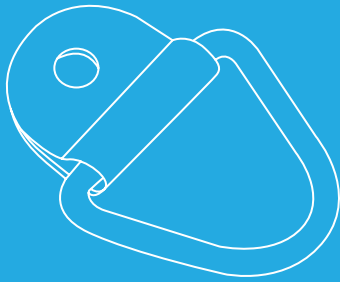


**SPECIAL  
ORDERS**

Find what you want but in the wrong size or finish?

Talk to the Bunnings Special Order Desk to view the extended range available by special order.





## LASHING RINGS

Made tough, with versatility in mind, lashing rings provide a reliable anchoring point for straps, ropes, and chains, keeping goods where they should be. A must-have accessory for any logistics or cargo management operation.



### LASHING RING

Zinc plated light duty lashing ring. Ideal for transport vehicles, utes & vans.

#### 4230134

22505-GP  
Zinc Plated. Individual.

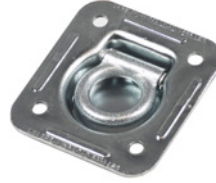


### LASHING RING

Anchor lashing ring with surface mounting plastic casing. Safe working load 250KG.

#### 4230220

9-01181-GP  
Zinc Plated in Plastic Housing. Individual.



### LASHING RING

Zinc plated heavy duty lashing ring. Safe working load 1850KG.

#### 4230002

9037-GP  
Zinc Plated. Individual.



### LASHING RING

Zinc plated lashing ring. Safe working load 500KG.

#### 4230001

9193-GP  
95 x 22 x 101mm. Zinc Plated. Individual.



### LASHING RING

Zinc plated lashing loop.

#### 4230172

9699-GP  
62 x 32mm. Zinc Plated Individual.



### LASHING RING

Zinc plated, lightweight lashing loop.

#### 4230133

LR01-GP  
28 x 5 x 45mm. Zinc Plated. Individual

# Things to consider when installing lashing rings on your truck or ute

## 1. EVEN DISTRIBUTION

Distribute lashing rings evenly throughout the cargo area to ensure balanced and secure anchoring points. This helps prevent shifting or tilting of the cargo during transit.

## 2. ACCESSIBILITY

Place lashing rings in locations that are easily accessible and convenient for attaching straps or tie-downs. Avoid positioning them too close to the edges of the cargo area, as this may limit access or interfere with securing the cargo.

## 3. CONSIDER CARGO SIZE AND SHAPE

Position lashing rings based on the size and shape of the cargo you typically transport. For larger or irregularly shaped items, consider placing lashing rings closer to the centre of the cargo area to provide more versatile anchoring points.

## 4. SECURE ATTACHMENT POINTS

Install lashing rings in areas of the vehicle bed or cargo area that provide a secure attachment point, such as structural cross members or reinforced mounting points. Avoid attaching lashing rings to weaker or less stable areas that may not withstand the force exerted by the cargo.

## 5. ADJUSTABLE MOUNTING OPTIONS

Consider using lashing rings with adjustable mounting options, such as track systems or removable anchor points. These allow you to customise the positioning of the lashing rings based on the specific requirements of each load.

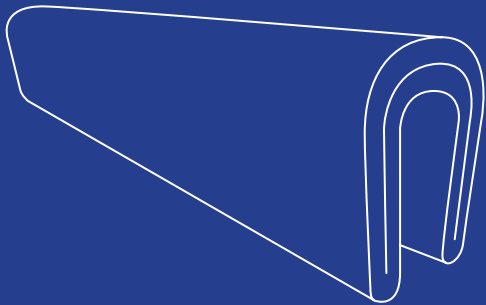
## 6. COMPLIANCE WITH REGULATIONS

Ensure that the positioning of lashing rings complies with any relevant regulations or standards governing cargo securement. These may vary depending on the jurisdiction and the type of cargo being transported.

## 7. TEST FOR STABILITY

Before transporting cargo, test the stability and security of the lashing rings by applying tension to the straps or tie-downs. Ensure that the lashing rings remain firmly anchored and that the cargo is adequately secured to prevent movement or shifting during transit.





## RUBBER

Rubber, EPDM, Neoprene, Nitrile and silicone solutions to protect, seal, hinge and lock. Our rubber has a profile that suits your sealing and protection needs and is used across a variety of automotive, transport, domestic and commercial applications.



## RUBBER

Top bulb rubber seal for toolboxes and sheet metal enclosures.

### 4230049

60-051SCH-GP  
4m. Rubber. 4m length.



## RUBBER

Side bulb rubber seal.

### 4230127

60-055N-GP  
3m. Rubber. 3m length.



## RUBBER

Flexible PVC plastic edge trim to protect edges from damage or protect from sharp edge.

### 4230125

66-035-GP  
5m. PVC. 5m length.



## RUBBER

D-shaped adhesive rubber seal. Ideal for tool boxes and metal enclosures.

### 4230050

X135HT-GP  
5m. Rubber.



## RUBBER

Blind grommets are ideal for sealing holes in ceilings and walls for wiring.

### 4230203

A11-GP  
15mm. Rubber. 4 pack



## RUBBER

Wiring grommet used to protect wires from sharp or abrasive edges.

### 4230080

A1-GP  
7.4 x 4mm. Rubber. 4 pack.

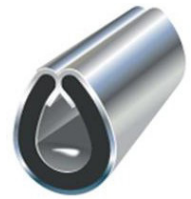


## RUBBER

Large Rubber buffer to prevent heavy impacts.

### 4230083

BB1001-GP  
60mm. Rubber.



## RUBBER

Flexible plastic chrome edge trim for protection and aesthetics. Used on car doors, furniture, vending machines, fender flares and more.

### 4230187

EGC-GP  
5m. Rubber. 5m length.



## RUBBER

Flexible plastic clear edge trim for protection. Used on car doors, furniture, vending machines, fender flares and more.

### 4230186

EGCL-GP  
5m. Rubber. 5m length.



## RUBBER

Flexible rubber hood fastener.

### 4230036

F7NiB-GP  
112mm. Rubber. Individual.



## RUBBER

Wiring grommet protect wires in centre of the loop from sharp and abrasive edges. Angled with a pull tab for easy installation.

### 4230175

G94-GP  
4 x 19mm. Rubber. 4 pack.



## RUBBER

Cylindrical rubber isolator useable in compression or shear applications.

### 4230094

GSP6004-GP  
30.5 x 40mm. Rubber. Individual.



RUBBER

Dome rubber isolator for vibration, shock and noise dampening. Ideal for fans, motors, compressors, electric equipment, pumps, generators and more.

**4230092**

GSP6007-GP  
30 x 40mm. Rubber. Individual.



RUBBER

Rubber door stop for door and wall protection.

**4230082**

M1-GP  
38 x 25mm. Rubber.



RUBBER

Rubber buffer strips for surface protection.

**4230084**

M20B-GP  
14 x 60mm. Rubber. 4 pack.



RUBBER

Rubber wheel chock for vehicles including trailers, caravans.

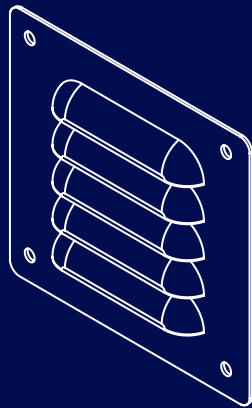
**4230128**

WC4-GP  
140 x 100mm. Rubber. Individual.

# Goliath Rubber Profiles

RUBBER TYPE	DESCRIPTION	STRENGTHS
EPDM	Ethylene Propylene Diene Monomer (EPDM) rubber is known for its excellent resistance to weathering, ozone, UV exposure, and temperature variations.	<ul style="list-style-type: none"><li>• Superior weather resistance, making it suitable for outdoor applications</li><li>• Excellent resistance to ozone and UV exposure, prolonging lifespan</li><li>• Resistant to heat, water, and steam</li><li>• Good flexibility and elasticity over a wide temperature range</li><li>• Chemical resistance to acids, alkalis, and polar solvents</li><li>• Low electrical conductivity</li></ul>
Nitrile	Nitrile rubber, also known as Buna-N or NBR, is a synthetic rubber with excellent resistance to oil, fuel, and chemicals.	<ul style="list-style-type: none"><li>• Excellent resistance to oil, fuel, and hydraulic fluids</li><li>• Good resistance to abrasion and tearing</li><li>• Resilient and durable in harsh environments</li><li>• Flexible over a wide temperature range</li><li>• Good adhesion to metals and other materials</li><li>• Moderate resistance to weathering and ozone exposure</li></ul>
PVC	Polyvinyl Chloride (PVC) is a synthetic thermoplastic polymer known for its versatility, durability, and affordability.	<ul style="list-style-type: none"><li>• Excellent resistance to corrosion, chemicals, and moisture</li><li>• Durable and long-lasting</li><li>• Lightweight and easy to handle</li><li>• Low cost compared to other rubber materials</li><li>• Good electrical insulation properties</li><li>• Flame-retardant properties</li></ul>





## VEHICLE ACCESSORIES

Comprising a range of locks and latches, vents, plastic rope hooks and reflectors to improve the safety and performance of cars, off road vehicles, trucks, buses, vans, etc..

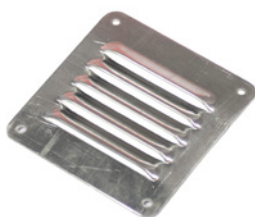


### TRANSPORT

T key for locks and latches with square key hole.

**4230174**

2257/004-GP  
130mm. Zinc Plated. Individual.



### TRANSPORT

Aluminium vent. Light weight. Suitable for electronic enclosures and vehicles.

**4230055**

AJ0025-GP  
100 x 100mm. Aluminium. Individual.



### TRANSPORT

Plastic rope hooks.

**4230185**

HM0-GP  
Plastic. 6 pack.



### TRANSPORT

Aluminium rope hooks.

**4230095**

HM1-GP  
Aluminium. 4 pack.



### TRANSPORT

Self adhesive amber reflectors (small).

**4230090**

WR120A-GP  
70 x 25 x 7mm. Plastic. 2 pack.



### TRANSPORT

Self adhesive clear reflectors (small).

**4230118**

WR120C-GP  
70 x 25 x 7mm. Plastic. 2 pack.



### TRANSPORT

Self adhesive red reflectors (small).

**4230117**

WR120R-GP  
70 x 25 x 7mm. Plastic. 2 pack.



### TRANSPORT

Self adhesive amber reflectors (large).

**4230116**

WR130A-GP  
70 x 32 x 7mm. Plastic. 2 pack.



### TRANSPORT

Self adhesive clear reflectors (large).

**4230088**

WR130C-GP  
70 x 32 x 7mm. Plastic. 2 pack.



### TRANSPORT

Self adhesive red reflectors (large).

**4230115**

WR130R-GP  
70 x 32 x 7mm. Plastic. 2 pack.

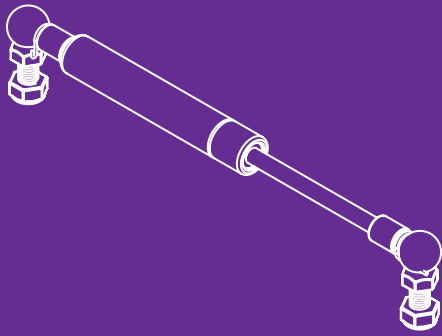


## **SPECIAL ORDERS**

Find what you  
want but in the  
wrong size or  
finish?

Talk to the Bunnings Special Order Desk to view  
the extended range available by special order.





## GAS STRUTS

Fitted to panels or structures that require assisted lifting, or to remain in a lifted position, gas struts allow assisted opening and closing across a range of automotive, domestic, residential and industrial applications.

## Gas Strut Installation Guide



### Step 1 - Safety & Set-Up

Ensure you have the correct strut by comparing it to the original.

Compare the part numbers on the gas struts. If the gas struts do not match, then do not attempt to use the replacement gas strut. Each gas strut is specific to an application and/or vehicle. There is danger in using a gas strut that is not specifically made for an application. Damage can be done to the vehicle and/or bodily injury can result.

Below is two methods of calculating the safety factor of weight of application to gas strut strength ratio.

Although it is highly advisable to consult a qualified expert or someone whos is experienced in changing gas struts if possible.

#### Simple Method:

Gas strut strength is measured in Newtons.

As a general rule,

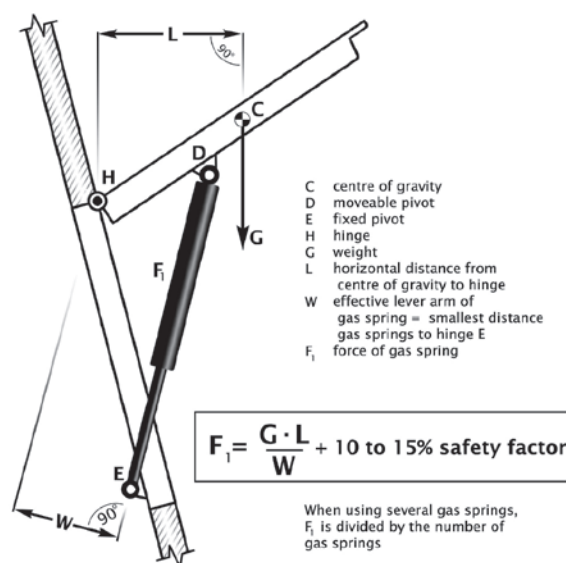
**100N = 10kg of strength.**

In other words, the weight of your hatch/door x 10 = strength of gas strut required

#### Note:

- Always install after painting, welding etc.
- The gas strut should always be fitted with the piston pointing down.
- Temperature range -30°C to +80°C
- Use suitable end fittings and angle joints to avoid coupling jamming.
- Gas strut are maintenance free, do not grease or lubricate shaft.
- Install without twisting.
- Avoid lateral forces.
- Protect piston against dirt, paint or damage.
- Output forces will vary approximately 4% for every 10°C change in temperature.

#### Precise Method:



### Step 2 – Remove old support strut

Have an assistant support the panel for you so that the liftgate, hood, trunk and /or lid to full extension of gas strut.

The application is held open as the gas strut is being replaced. If the application has 2 gas struts, one gas strut does not have enough output force to hold open the application. Therefore, to avoid injury and damage, a second person is required to hold application open.



First, you need to remove the safety clip (see above). You can do this by hand or using a pair of pliers to grab on and unwind the safety clip. Unthread the clip from the gas strut hood and remove. Now you may pop the ball head of your attachment out of the gas strut unit. Repeat for the opposite side.

### Step 3 – Install new support strut

Take the replacement strut and press the clip onto the mounting point on the body. Re-insert safety clip.

### Step 4 – Repeat and check operation

Repeat the procedure for the opposite side. Always replace support struts in pairs. Then lower the bonnet or boot to check the struts are now operating correctly.

#### Note:

A variety of brackets and end fittings are appropriate for different applications. They should all have a ball head and can be applied the same way.





BUNNINGS P/N	GOLIATH P/N	RATING	LENGTH	FINISH	PACK QTY
<b>4230023</b>	46010-GP	100 Nm	185mm	Steel/corrosion resistant black	Individual
<b>4230062</b>	46017-GP	100 Nm	325mm	Steel/corrosion resistant black	Individual
<b>4230024</b>	46019-GP	100 Nm	502mm	Steel/corrosion resistant black	Individual
<b>4230184</b>	46021-GP	150 Nm	505mm	Steel/corrosion resistant black	Individual
<b>4230058</b>	46022-GP	150 Nm	325mm	Steel/corrosion resistant black	Individual
<b>4230060</b>	46025-GP	200 Nm	535mm	Steel/corrosion resistant black	Individual
<b>4230025</b>	46033-GP	250 Nm	502mm	Steel/corrosion resistant black	Individual
<b>4230183</b>	46041-GP	300 Nm	502mm	Steel/corrosion resistant black	Individual
<b>4230182</b>	46051-GP	350 Nm	502mm	Steel/corrosion resistant black	Individual
<b>4230181</b>	46052-GP	350 Nm	565mm	Steel/corrosion resistant black	Individual
<b>4230026</b>	46059-GP	400 Nm	502mm	Steel/corrosion resistant black	Individual
<b>4230180</b>	46064-GP	450 Nm	502mm	Steel/corrosion resistant black	Individual
<b>4230179</b>	46070-GP	450 Nm	535mm	Steel/corrosion resistant black	Individual
<b>4230178</b>	46085-GP	500 Nm	535mm	Steel/corrosion resistant black	Individual
<b>4230177</b>	46093-GP	600 Nm	535mm	Steel/corrosion resistant black	Individual
<b>4230059</b>	46146-GP	650 Nm	700mm	Steel/corrosion resistant black	Individual
<b>4230061</b>	46151-GP	250 Nm	380mm	Steel/corrosion resistant black	Individual



Stay Metal.

#### 4230063

552803-GP  
Steel. Individual.



Gas Strut ball joint outside bracket.  
Ideal for hatches, toolboxes, windows,  
lids and enclosures.

#### 4230085

91005-GP  
51 x 19 x 34mm. Raw/stainless steel.  
Pair.

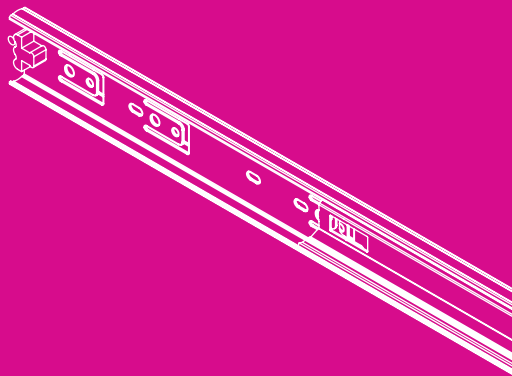


Gas Strut ball joint inside bracket. Ideal  
for hatches, toolboxes, windows, lids  
and enclosures.

#### 4230027

91006-GP  
20 x 25mm. Raw/stainless steel.  
Pair.





# DRAWER SLIDES

Drawer Slides are easy to install and available in various lengths to suit a range of applications. Perfect for office furniture, kitchen furniture, home cabinets, utilities & trailers, industrial workstations, medical equipment.

STANDARD



BUNNINGS P/N	GOLIATH P/N	LENGTH	RATED (KG)	FINISH	PACK QTY
0043588	DS200STD	200mm	45	Zinc plated/hardened steel	Pair
4020967	DS300STD	300mm	45	Zinc plated/hardened steel	Pair
4020968	DS350STD	350mm	45	Zinc plated/hardened steel	Pair
4020969	DS400STD	400mm	45	Zinc plated/hardened steel	Pair
4020970	DS450STD	450mm	45	Zinc plated/hardened steel	Pair
4020971	DS500STD	500mm	45	Zinc plated/hardened steel	Pair
4020972	DS550STD	550mm	45	Zinc plated/hardened steel	Pair
4020973	DS600STD	600mm	45	Zinc plated/hardened steel	Pair

Scan QR Code for  
installation guide



SOFT CLOSE

NO NOISE CLOSING, SAFE  
FOR SMALL FINGERS



BUNNINGS P/N	GOLIATH P/N	LENGTH	RATED (KG)	FINISH	PACK QTY
4020974	DS300SC	300mm	45	Zinc plated/hardened steel	Pair
4020975	DS350SC	350mm	45	Zinc plated/hardened steel	Pair
4020976	DS400SC	400mm	45	Zinc plated/hardened steel	Pair
4020977	DS450SC	450mm	45	Zinc plated/hardened steel	Pair
4020978	DS500SC	500mm	45	Zinc plated/hardened steel	Pair
4020980	DS550SC	550mm	45	Zinc plated/hardened steel	Pair
4020981	DS600SC	600mm	45	Zinc plated/hardened steel	Pair

Scan QR Code for  
installation guide



# PUSH TO OPEN

NO HANDLES REQUIRED!  
IDEAL FOR HANDLELESS DRAWERS.



BUNNINGS P/N	GOLIATH P/N	LENGTH	RATED (KG)	FINISH	PACK QTY
4020982	DS300PTO	300mm	45	Zinc plated/hardened steel	Pair
4020983	DS350PTO	350mm	45	Zinc plated/hardened steel	Pair
4020984	DS400PTO	400mm	45	Zinc plated/hardened steel	Pair
4020985	DS450PTO	450mm	45	Zinc plated/hardened steel	Pair
4020986	DS500PTO	500mm	45	Zinc plated/hardened steel	Pair
4020988	DS550PTO	550mm	45	Zinc plated/hardened steel	Pair
4020989	DS600PTO	600mm	45	Zinc plated/hardened steel	Pair

Scan QR Code for  
installation guide



# SLIMLINE



BUNNINGS P/N	GOLIATH P/N	LENGTH	RATED (KG)	FINISH	PACK QTY
0043590	DS250SL	250mm	15	Zinc plated/hardened steel	Pair
0043591	DS300SL	300mm	15	Zinc plated/hardened steel	Pair
0043592	DS400SL	400mm	15	Zinc plated/hardened steel	Pair

Scan QR Code for  
installation guide



HEAVY DUTY



BUNNINGS P/N	GOLIATH P/N	LENGTH	RATED (KG)	FINISH	PACK QTY
4020990	DS500HD	500mm	90	Zinc plated/hardened steel	Pair
4020991	DS700HD	700mm	90	Zinc plated/hardened steel	Pair
4020992	DS800HD	800mm	90	Zinc plated/hardened steel	Pair
4020993	DS1000HD	1000mm	90	Zinc plated/hardened steel	Pair

Scan QR Code for  
installation guide



HEAVY DUTY  
LOCKABLE



BUNNINGS P/N	GOLIATH P/N	LENGTH	RATED (KG)	FINISH	PACK QTY
4021063	DS600HDL	600mm	90	Zinc plated/hardened steel	Pair
4021065	DS700HDL	700mm	90	Zinc plated/hardened steel	Pair
4021066	DS800HDL	800mm	90	Zinc plated/hardened steel	Pair
4021067	DS1000HDL	1000mm	90	Zinc plated/hardened steel	Pair

Scan QR Code for  
installation guide



HEAVY DUTY  
UNDERMOUNT



BUNNINGS P/N	GOLIATH P/N	LENGTH	RATED (KG)	FINISH	PACK QTY
0331945	30RR-01-450	450mm	90	Zinc plated/hardened steel	Pair
0331946	30RR-01-500	500mm	90	Zinc plated/hardened steel	Pair

## EXTRA HEAVY DUTY



BUNNINGS P/N	GOLIATH P/N	LENGTH	RATED (KG)	FINISH	PACK QTY
<b>4021068</b>	DS600XHD	600mm	225	Zinc plated/hardened steel	Pair
<b>4021069</b>	DS700XHD	700mm	225	Zinc plated/hardened steel	Pair
<b>4021070</b>	DS800XHD	800mm	225	Zinc plated/hardened steel	Pair
<b>4021073</b>	DS1200XHD	1200mm	225	Zinc plated/hardened steel	Pair
<b>4021074</b>	DS1500XHD	1500mm	225	Zinc plated/hardened steel	Pair

Scan QR Code for  
installation guide



## EXTRA HEAVY DUTY LOCKABLE



BUNNINGS P/N	GOLIATH P/N	LENGTH	RATED (KG)	FINISH	PACK QTY
<b>4021075</b>	DS600XHDL	600mm	225	Zinc plated/hardened steel	Pair
<b>4021076</b>	DS700XHDL	700mm	225	Zinc plated/hardened steel	Pair
<b>4021077</b>	DS800XHDL	800mm	225	Zinc plated/hardened steel	Pair
<b>4021078</b>	DS1000XHDL	1000mm	225	Zinc plated/hardened steel	Pair
<b>4021079</b>	DS1200XHDL	1200mm	225	Zinc plated/hardened steel	Pair
<b>4021081</b>	DS1500XHDL	1500mm	225	Zinc plated/hardened steel	Pair

Scan QR Code for  
installation guide



**HAVE A QUESTION WE HAVEN'T ANSWERED?**  
COMPLETE OUR ONLINE  
FORM TO ASK!



GOLIATH  
**1300 00 1904**

**HEAD OFFICE**  
10 Birmingham Street  
Alexandria NSW 2015



**[goliathhardware.com.au](http://goliathhardware.com.au)**



A DIVISION OF  
**UES INTERNATIONAL**